

Practical, Hygienic & Flexible Design

Parflex[®]
Screen Systems

Svensk återförsäljare:

Aspira Medical AB

Duvnäs

781 90 Borlänge

tel: 0243-230500 email:

info@aspira.se hemsida:

www.aspira.se

Parflex Screens are state of the art separation and privacy systems for hospitals, examination rooms, medical & health units as well as many different areas through it's innovative and practical design.

State Of The Art Privacy Screen Systems

Parflex separation screens provide practical, healthy and hygienic privacy solutions in hospitals and other usage areas through it's versatile, fast and effective separation systems.

The systems can easily be mounted and setup without interfering with ceilings, walls or any other components in that specific area.

Our screens are easily accessible and ready to use right away with a wide variety of mobile solutions offering flexibility and practicality for it's users.

The systems do not need to be mounted on a wall and offer mobility during separation and division of private areas.

Parflex separation systems offer endless possibilities through it's wide range of options and versatility, just as our company motto states;

"Dividing & Separating Without Confining Yourself..."

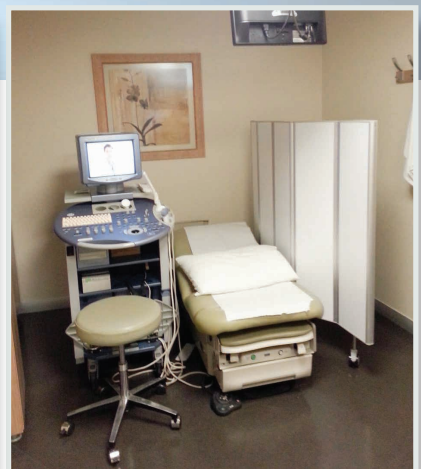


Maximize Your Room View Without Losing It's Unity

Parflex separation systems provide the best visual means of communication within shared areas without limiting the patient and personnel eye contact. This is especially important in intensive care and observation units where the medical staff need a clear view of the medical equipment as well as the patient itself. Our screens also allow for daylight to flow into the room and brighten the atmosphere. As each screen is completely mobile

and movable, it is very easy to increase the space around patient's bed during procedures.

If additional privacy is required, a mobile screen can also be added at the end to increase the separation area. Parflex screen systems also offer customization options in terms of length and width in shared areas to answer the specific needs of our users and clients.





As the separator screens are easily movable, it is very easy to increase the workspace around patient beds and tables.



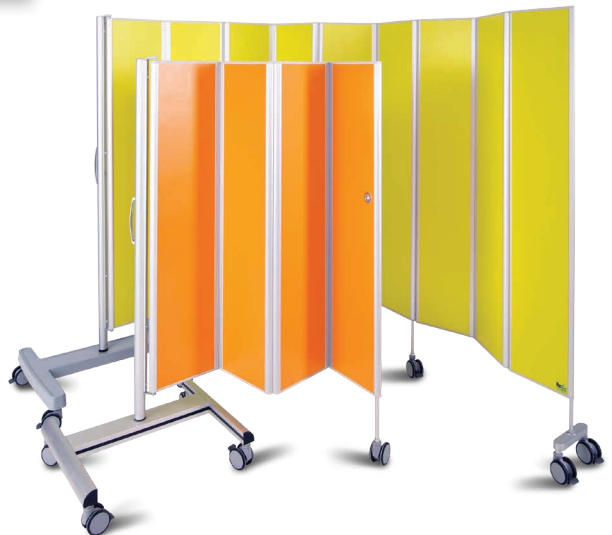
More Privacy and Peace of Mind for Resting & Visiting Hours

Parflex screen systems provide practical and aesthetic privacy and separation solutions for our daily lives in public or private areas through its' flexibility and adaptability.

Our systems provide fast and easy separation in crowded areas and rooms giving rapid access to patients as well as allowing them to rest comfortably. Foldable bed end screens

in combination with the fixed separation screens between the beds allow for efficient use of the referenced areas. Foldable screens can easily be opened and utilized during examination and for all other purposes. They can easily be closed after usage for cleaning and stored without taking up too much space. All fixed and foldable separation screens can be manufactured in different lengths and widths as well as other custom options.

A mobile separation screen can also be used for additional privacy purposes.



Manufactured for You and Your Patients Special Needs...

Simplicity is one of our basic R & D principles. Separation screens must be able to provide the patient with the required privacy and solitude for resting with it's easy to use structure. Parflex screens have been designed to work flawlessly with all it's components and accessories. Easy to setup wall mounted units can be separated

from the whole system and used as a temporary separator with mobile units. With our Parflex separator system, you are not limited to one single solution. Our practical and effective system will allow you to establish a special private area for you or your patient no matter where you are.

A System Appreciated by Patients Of All Ages...

Sharing a room with multiple patients should not mean that you need to share your personal space and privacy with others as well. Parflex screens setup between beds make it easier for you to protect your privacy. It takes only a few seconds to separate two beds and patients with our foldable screens. The mobile modules provide you the chance to protect your and/or your patients privacy during special treatments, baths etc. by providing separation for tubs, basins and other sanitary equipment. Our screens also provide a better and more enjoyable atmosphere during examinations and treatment situations.

visuals pleasing to the eye especially for pediatric patients which can be used during their diagnosis and treatments.

• ***Please contact us for more information on our printed screen designs.***

We can manufacture our screens with custom designed themes and various selected



Dimensions, Colours & Pattern Choices

Product Code	Height h (cm) (± %1)	Length l (cm) (± %1)	Thickness t (cm) (± %1)	Weight Kg. (± %5)	Screen Plating Codes & Patterns			
					3142	3151	4282	3153
PAR14590	145	90	6	5,8	<p>Mobile Module</p>			
PAR145150	145	150	10	9,7				
PAR145210	145	210	14	13,5				
PAR145270	145	270	18	17,4				
PAR16590	165	90	6	6,8				
PAR165150	165	150	10	11,3				
PAR165210	165	210	14	15,8				
PAR165270	165	270	18	20,3				
PAR18590	185	90	6	7,7				
PAR185150	165	150	10	12,9				
PAR185210	165	210	14	18				
PAR185270	165	270	18	23,2				

Installation Profile

Product Code	Height h (cm) (± %1)
MP 145	145
MP 165	165
MP 185	185

Mobile Module



HM145 / HM165 / HM185

Features



Easy to clean



Washable

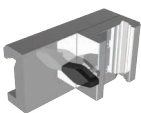


Easy on-off

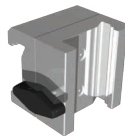


Easy to install

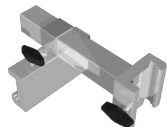
Accessories



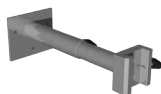
Standard Clamp
For Hospital
Wall Rails



Support Clamp
For Hospital
Wall Rails



Adjustable
Clamp For
Hospital Wall
Rails



Adjustable
Spacer For
Walls



Practical, Hygienic & Flexible Design...

Parflex[®]
Screen Systems

- Hospitals
- Examination Rooms
- Offices
- Gyms & Fitness Centers
- Massage Parlors
- Exhibition Stands
- Apart Hotels
- Holiday Resorts
- Camping Zones
- Home Care & Other Special Situations



Svensk återförsäljare:

Aspira Medical AB
Duvnäs
781 90 Borlänge
tel: 0243-230500 email:
info@aspira.se hemsida:
www.aspira.se



Manufacturer:

BEK teknik
ENERJİ

BEK TEKNİK ENERJİ TİC. LTD. ŞTİ.

19 Mayıs Mah. İnönü Cad. Sümer Sk. Sümko Sit. M1, B Blok D: 5
Kozyatağı - Kadıköy / İstanbul
Tel: (0 216) 410 40 90 - 13 • Fax: (0 216) 410 75 54
e-mail: info@parflex.com.tr



www.parflex.com.tr