

Kinnarps AB  
PO Box 3060  
521 88 Kinnarp  
SWEDEN

Eurofins Product Testing A/S  
Smedeskovvej 38  
8464 Galten  
Denmark

VOC@eurofins.com  
www.eurofins.com/VOC-testing

## VOC TEST REPORT


### Indoor Air Comfort GOLD<sup>®</sup>

10 August 2016

#### 1 Sample Information

|                  |               |
|------------------|---------------|
| Sample name      | Capella CF121 |
| Batch no.        | -             |
| Production date  | 16/06/2016    |
| Product type     | Chair         |
| Sample reception | 20/06/2016    |

#### 2 Brief Evaluation of the Results

| Regulation or protocol               | Conclusion  | Version of regulation or protocol  |
|--------------------------------------|---|--|
| French VOC Regulation                |  | Regulation of March and April 2011 (DEVL1101903D and DEVL1104875A)       |
| French CMR components                | Pass  | Regulation of March and April 2011 (DEVL1101903D and DEVL1104875A)       |
| AgBB                                 | Pass  | AgBB of February 2015. DIBt of October 2010                              |
| Belgian Regulation                   | Pass  | Royal decree of May 2015 (C-2014/24239)                                  |
| Indoor Air Comfort <sup>®</sup>      | Pass  | Indoor Air Comfort 5.3a of March 2015                                    |
| Indoor Air Comfort GOLD <sup>®</sup> | Pass  | Indoor Air Comfort GOLD 5.3a of March 2015                               |
| EN 717-1 <sup>s</sup>                | E1  | 2004   |
| Blue Angel (RAL UZ 117)              | Pass  | Low-Emission Upholstered Furniture, September 2009                       |
| BREEAM International                 | Compliant   | GN22: BREEAM Recognised Schemes for VOC Emissions from Building Products |

Full details based on the testing and direct comparison with limit values is available in the following pages



Maria Pelle  
Chemist



Janne R. Norup  
Chemist

## Table of contents

|          |  |           |
|----------|--|-----------|
| <b>1</b> | <b>Sample Information</b>  | <b>1</b>  |
| <b>2</b> | <b>Brief Evaluation of the Results</b>                               | <b>1</b>  |
| <b>3</b> | <b>Applied Test Methods</b>  | <b>3</b>  |
| 3.1      | General Test References  | 3         |
| 3.2      | Specific Laboratory Sampling and Analyses                            | 3         |
| <b>4</b> | <b>Test Parameters, Sample Preparation and Deviations</b>            | <b>4</b>  |
| 4.1      | VOC Emission Chamber Test Parameters                                 | 4         |
| 4.2      | Preparation of the Test Specimen                                     | 4         |
| 4.3      | Picture of Sample  | 4         |
| 4.4      | Deviations from Referenced Protocols and Regulations                 | 5         |
| <b>5</b> | <b>Results</b>   | <b>6</b>  |
| 5.1      | VOC Emission Test Results after 3 Days                               | 6         |
| 5.2      | VOC Emission Test Results after 28 Days                              | 7         |
| <b>6</b> | <b>Summary and Evaluation of the Results</b>                         | <b>9</b>  |
| 6.1      | Comparison with Limit Values of the French VOC Regulation            | 9         |
| 6.2      | Comparison with Limit Values of the CMR Components                   | 9         |
| 6.3      | Comparison with Limit Values of AgBB                                 | 10        |
| 6.4      | Comparison with Limit Values of the Belgian Regulation               | 10        |
| 6.5      | Comparison with Limit Values of EN 717-1 <sup>s</sup>                | 10        |
| 6.6      | Comparison with Limit Values of Indoor Air Comfort <sup>®</sup>      | 11        |
| 6.7      | Comparison with Limit Values of Indoor Air Comfort Gold <sup>®</sup> | 11        |
| 6.8      | Comparison with Limit Values of Blue Angel (RAL UZ 117)              | 12        |
| <b>7</b> | <b>Appendices</b>  | <b>13</b> |
| 7.1      | Chromatogram of VOC Emissions after 3 Days                           | 13        |
| 7.2      | Chromatogram of VOC Emissions after 28 Days                          | 13        |
| 7.3      | How to Understand the Results  | 14        |
| 7.4      | Applied LCI and NIK Values   | 15        |
| 7.5      | Description of VOC Emission Test                                     | 16        |
| 7.6      | Quality Assurance  | 18        |
| 7.7      | Accreditation  | 18        |
| 7.8      | Uncertainty of the Test Method                                       | 18        |

### 3 Applied Test Methods

#### 3.1 General Test References

| Regulation, protocol or standard | Version  | Reporting limit VOC [ $\mu\text{g}/\text{m}^3$ ] | Calculation of TVOC | Combined uncertainty <sup>a</sup> [RSD(%)] |
|----------------------------------|--|--|---------------------|--|
| CEN/TS 16516                     | October 2013   | 5  | Toluene equivalents | 22.5%                                      |
| ISO 16000 -3 -6 -9 -11           | 2006-2011 depending on part  | 2  | Toluene equivalents | 22.5%                                      |
| French VOC                       | Regulation of March and April 2011 (DEVL1101903D and DEVL1104875A) | 2  | Toluene equivalents | 22.5%                                      |
| AgBB/DIBt                        | February 2015/October 2010   | 5  | Compound Specific   | 22.5%                                      |
| Belgian VOC                      | Royal decree of May 2015 (C - 2014 / 24239)                        | 5  | Toluene equivalents | 22.5%                                      |
| EMICODE                          | November 2015  | 5  | Toluene equivalents | 22.5%                                      |
| EN 717-1 <sup>§</sup>            | 2004   | -  | (Formaldehyde only) | 22.5%                                      |
| Blue Angel (RAL UZ 38)           | January 2013   | 5  | Compound Specific   | 22.5%                                      |
| Blue Angel (RAL UZ 117)          | September 2009   | 5  | Compound Specific   | 22.5%                                      |

#### 3.2 Specific Laboratory Sampling and Analyses

| Procedure                    | External Method   | Internal S.O.P. | Quantification limit / sampling volume | Analytical principle    | Uncertainty <sup>a</sup> |
|------------------------------|---|-----------------|--|-------------------------|--------------------------|
| Sample preparation           | ISO 16000-11:2006, EN16402:2013, CDPH, AgBB/DIBt, EMICODE | 71M549810       | -                                      | -                       | -                        |
| VOC emission chamber testing | ISO 16000-9:2006, CEN/TS 16516:2013                       | 71M549811       | -                                      | Chamber and air control | -                        |
| Sampling of VOC              | ISO 16000-6:2011, CEN/TS 16516:2013                       | 71M549812       | 5 L                                    | Tenax TA                | -                        |
| Analysis of VOC              | ISO 16000-6:2011, CEN/TS 16516:2013                       | 71M542808B      | 1 $\mu\text{g}/\text{m}^3$             | ATD-GC/MS               | 10%                      |
| Sampling of aldehydes        | ISO 16000-3:2011, CEN/TS 16516:2013                       | 71M549812       | 35 L                                   | DNPH                    | -                        |
| Analysis of aldehydes        | ISO 16000-3:2011, EN 717-1, CEN/TS 16516:2013             | 71M548400       | 3-6 $\mu\text{g}/\text{m}^3$           | HPLC-UV                 | 10%                      |
| Sampling of phthalates       | ISO 16200-1, MEL-09, OSHA CSI                             | 71M549812       | 60 L                                   | XAD-2                   | -                        |
| Analysis of phthalates*      | CPSC-CH-C1001-09.3 (2010)                                 | 71M546060       | 0.6 $\mu\text{g}/\text{m}^3$           | GC/MS                   | 10%                      |

The results are only valid for the tested sample(s).

This report may only be copied or reprinted in its entirety, parts of it only with a written acceptance by Eurofins.

## 4 Test Parameters, Sample Preparation and Deviations

### 4.1 VOC Emission Chamber Test Parameters

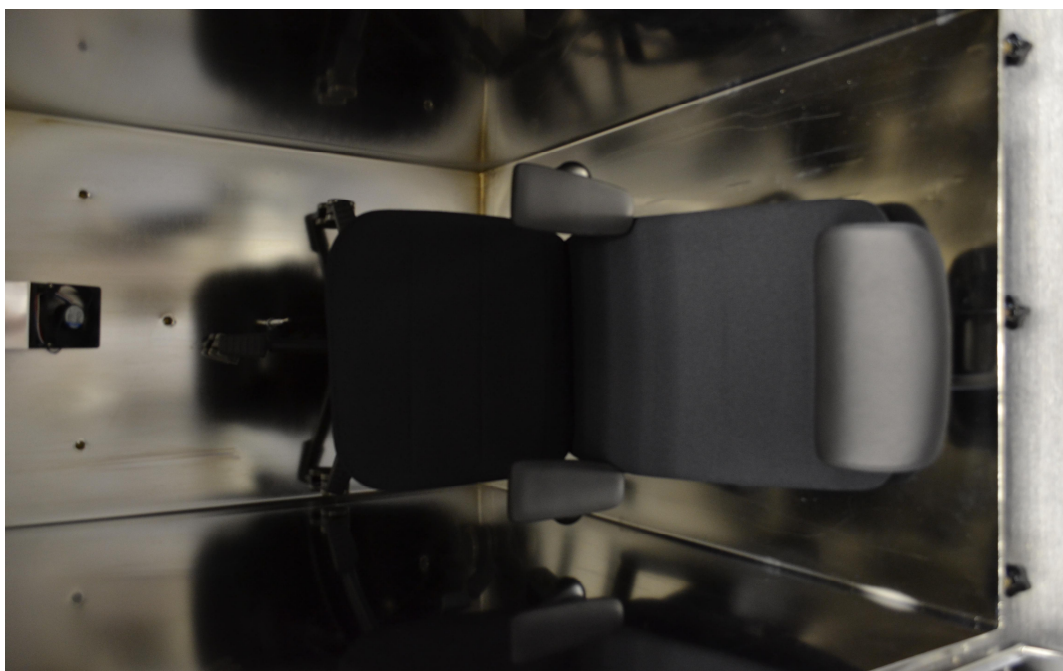
| Parameter                               | Value  | Parameter  | Value                   |
|---|--------|--|-------------------------|
| Chamber volume, V[L]                    | 1000   | Preconditioning period                                     | -                       |
| Air Change rate, n[h <sup>-1</sup> ]    | 0.5    | Test period  | 06/07/2016 - 03/08/2016 |
| Relative humidity of supply air, RH [%] | 50 ± 3 | Unit specific ventilation rate, q [m <sup>3</sup> /unit/h] | 0.5                     |
| Temperature of supply air, T [°C]       | 23 ± 1 | Loading factor [unit/m <sup>3</sup> ]                      | 1*                      |

\* The measured concentrations were re-calculated into concentrations in the European Reference Room. The concentrations given in this report are the expected concentrations from having one piece of specimen in the European Reference Room.

### 4.2 Preparation of the Test Specimen

The sample was transferred directly into the chamber.

### 4.3 Picture of Sample



## 4.4 Deviations from Referenced Protocols and Regulations

No deviations from the referenced test methods were observed except the general deviations.

### 4.4.1 General Deviations

| Method                | Deviation details   | Impact on results or correction   |
|-----------------------|---|---|
| EN 717-1 <sup>§</sup> | Sampling flow on DNPH was 300 mL/min. The RH% in the supply air to the chamber was $50 \pm 3\%$ and not $45 \pm 3\%$ during the test. The temperature was $23 \pm 1^\circ\text{C}$ and not $23 \pm 0.5^\circ\text{C}$ . The air change rate was 0.5/h and not 1/h. The sample was tested without open edges unless otherwise stated under sample preparation. | Formaldehyde concentration can be expected to be slightly overestimated compared to EN 717-1 due to the higher RH% and lower air change rate in ISO 16000-9. The E1 limit value of $120 \mu\text{g}/\text{m}^3$ has been recalculated to $\text{SER}_A$ of $120 \mu\text{g}/\text{m}^2/\text{h}$ and compared with the detected $\text{SER}_A$ (in accordance with conclusion presented in CEN TC351 WG2 N174). |

## 5 Results

### 5.1 VOC Emission Test Results after 3 Days

|  | CAS No.  | Retention<br>time<br>[min] | ID-<br>Cat | Specific<br>Conc.<br>[µg/m³] | Toluene<br>eq.<br>[µg/m³] | Specific<br>SER<br>[µg/(unit*h)] | R <sub>D</sub> | R <sub>B</sub> |
|--|----------|----------------------------|------------|------------------------------|---------------------------|----------------------------------|----------------|----------------|
| <b>VOC with NIK</b>                              |          |                            |            |                              |                           |                                  |                |                |
| Saturated aliphatic hydrocarbons higher than C9* | -        | 8.2-14.6                   | 2          | 5.3                          | 5.3                       | 80                               | 0.0009         | 0.0009         |
| <b>VOC without NIK</b>                           |          |                            |            |                              |                           |                                  |                |                |
| None determined                                  |          |                            |            |                              |                           |                                  | -              | -              |
| <b>Sum of VOC without NIK</b>                    |          |                            |            |                              |                           |                                  |                |                |
| <b>TVOC</b>                                      |          |                            |            | 5.3                          | 5.3                       | 80                               |                |                |
| <b>VVOC compounds</b>                            |          |                            |            |                              |                           |                                  |                |                |
| None determined                                  |          |                            |            |                              |                           |                                  |                |                |
| <b>TVVOC</b>                                     |          |                            |            | < 5                          | < 5                       | < 80                             |                |                |
| <b>SVOC compounds</b>                            |          |                            |            |                              |                           |                                  |                |                |
| None determined                                  |          |                            |            |                              |                           |                                  |                |                |
| <b>TSVOC</b>                                     |          |                            |            |                              |                           |                                  |                |                |
| <b>Carcinogens</b>                               |          |                            |            |                              |                           |                                  |                |                |
| <b>Total carcinogens</b>                         |          |                            |            | < 1                          | < 1                       | < 20                             |                |                |
| <b>Aldehydes</b>                                 |          |                            |            |                              |                           |                                  |                |                |
| Formaldehyde                                     | 50-00-0  |                            | 1          | < 3                          | -                         | < 50                             | -              | -              |
| Acetaldehyde                                     | 75-07-0  |                            | 1          | < 3                          | -                         | < 50                             | -              | -              |
| Propionaldehyde                                  | 123-38-6 |                            | 1          | < 3                          | -                         | < 50                             | -              | -              |
| Butyraldehyde                                    | 123-72-8 |                            | 1          | < 3                          | -                         | < 50                             | -              | -              |
| <b>R-values</b>                                  |          |                            |            |                              |                           |                                  | 0.0009         | 0.0009         |

## 5.2 VOC Emission Test Results after 28 Days

|                               | CAS No.   | Retention time<br>[min] | ID-Cat | Specific Conc.<br>[µg/m³] | Toluene eq.<br>[µg/m³] | Specific SER<br>[µg/(m²·h)] | R <sub>D</sub> | R <sub>B</sub> |
|-------------------------------|-----------|-------------------------|--------|---------------------------|------------------------|-----------------------------|----------------|----------------|
| <b>VOC with NIK</b>           |           |                         |        |                           |                        |                             |                |                |
| None determined               |           |                         |        |                           |                        |                             |                |                |
| <b>VOC without NIK</b>        |           |                         |        |                           |                        |                             |                |                |
| None determined               |           |                         |        |                           |                        |                             |                |                |
| <b>Sum of VOC without NIK</b> |           |                         |        |                           |                        |                             |                |                |
| <b>TVOC</b>                   |           |                         |        | < 5                       | < 5                    | < 80                        |                |                |
| <b>VVOC compounds</b>         |           |                         |        |                           |                        |                             |                |                |
| None determined               |           |                         |        |                           |                        |                             |                |                |
| <b>TVVOC</b>                  |           |                         |        | < 5                       | < 5                    | < 80                        |                |                |
| <b>SVOC compounds</b>         |           |                         |        |                           |                        |                             |                |                |
| None determined               |           |                         |        |                           |                        |                             |                |                |
| <b>TSVOC</b>                  |           |                         |        |                           |                        |                             |                |                |
| <b>Carcinogens</b>            |           |                         |        |                           |                        |                             |                |                |
| <b>Total carcinogens</b>      |           |                         |        | < 1                       | < 1                    | < 20                        |                |                |
| <b>CMR substances</b>         |           |                         |        |                           |                        |                             |                |                |
| Benzene                       | 71-43-2   |                         | 1      | < 1                       | -                      | < 20                        |                |                |
| Trichloroethylene             | 79-01-6   |                         | 1      | < 1                       | -                      | < 20                        |                |                |
| Dibutylphthalate (DBP)*       | 84-74-2   |                         | 1      | < 1                       | -                      | < 20                        |                |                |
| Diethylhexylphthalate (DEHP)* | 117-81-7  |                         | 1      | < 1                       | -                      | < 20                        |                |                |
| <b>Aldehydes</b>              |           |                         |        |                           |                        |                             |                |                |
| Formaldehyde                  | 50-00-0   |                         | 1      | < 3                       | -                      | < 50                        | -              | -              |
| Acetaldehyde                  | 75-07-0   |                         | 1      | < 3                       | -                      | < 50                        | -              | -              |
| Propionaldehyde               | 123-38-6  |                         | 1      | < 3                       | -                      | < 50                        | -              | -              |
| Butyraldehyde                 | 123-72-8  |                         | 1      | < 3                       | -                      | < 50                        | -              | -              |
| <b>R-values</b>               |           |                         |        |                           |                        |                             | 0              | 0              |
| <b>TVOC (French label)</b>    |           |                         |        |                           | < 2                    |                             |                |                |
| Toluene                       | 108-88-3  |                         |        | < 2                       | < 2                    | < 30                        |                |                |
| Tetrachloroethylene           | 127-18-4  |                         |        | < 2                       | < 2                    | < 30                        |                |                |
| Ethylbenzene                  | 100-41-4  |                         |        | < 2                       | < 2                    | < 30                        |                |                |
| Xylene                        | 1330-20-7 |                         |        | < 2                       | < 2                    | < 30                        |                |                |

The results are only valid for the tested sample(s).





This report may only be copied or reprinted in its entirety, parts of it only with a written acceptance by Eurofins.

|                        | CAS No.  | Retention<br>time<br>[min] | ID-<br>Cat | Specific<br>Conc.<br>[µg/m³] | Toluene<br>eq.<br>[µg/m³] | Specific<br>SER<br>[µg/(m²*h)] | R <sub>D</sub> | R <sub>B</sub> |
|------------------------|----------|----------------------------|------------|------------------------------|---------------------------|--------------------------------|----------------|----------------|
| Styrene                | 100-42-5 |                            |            | < 2                          | < 2                       | < 30                           |                |                |
| 2-Butoxyethanol        | 111-76-2 |                            |            | < 2                          | < 2                       | < 30                           |                |                |
| 1,2,4-Trimethylbenzene | 95-63-6  |                            |            | < 2                          | < 2                       | < 30                           |                |                |
| 1,4-Dichlorobenzene    | 106-46-7 |                            |            | < 2                          | < 2                       | < 30                           |                |                |



## 6 Summary and Evaluation of the Results

### 6.1 Comparison with Limit Values of the French VOC Regulation

|                        | CAS No.   | Conc.<br>28 days<br>$\mu\text{g}/\text{m}^3$ | <br>$\mu\text{g}/\text{m}^3$ | <br>$\mu\text{g}/\text{m}^3$ | <br>$\mu\text{g}/\text{m}^3$ | <br>$\mu\text{g}/\text{m}^3$ |
|------------------------|-----------|--|--|---|---|---|
| TVOC                   | -         | < 2  | >2000  | <2000   | <1500   | <1000   |
| Formaldehyde           | 50-00-0   | < 3  | >120   | <120  | <60   | <10   |
| Acetaldehyde           | 75-07-0   | < 3  | >400   | <400  | <300  | <200  |
| Toluene                | 108-88-3  | < 2  | >600   | <600  | <450  | <300  |
| Tetrachloroethylene    | 127-18-4  | < 2  | >500   | <500  | <350  | <250  |
| Ethylbenzene           | 100-41-4  | < 2  | >1500  | <1500   | <1000   | <750  |
| Xylene                 | 1330-20-7 | < 2  | >400   | <400  | <300  | <200  |
| Styrene                | 100-42-5  | < 2  | >500   | <500  | <350  | <250  |
| 2-Butoxyethanol        | 111-76-2  | < 2  | >2000  | <2000   | <1500   | <1000   |
| 1,2,4-Trimethylbenzene | 95-63-6   | < 2  | >2000  | <2000   | <1500   | <1000   |
| 1,4-Dichlorobenzene    | 106-46-7  | < 2  | >120   | <120  | <90   | <60   |

The product was assigned a VOC emission class without taking into account the measurement uncertainty associated with the result. As specified in French Decree no. 2011-321 of March 23 2011, correct assignment of the VOC emission class is the sole responsibility of the party responsible for distribution of the product in the French market.

### 6.2 Comparison with Limit Values of the CMR Components

| CMR substances                | CAS No.  | Conc.<br>28 days<br>$\mu\text{g}/\text{m}^3$ | Max. allowed air concentration<br>$\mu\text{g}/\text{m}^3$ |
|-------------------------------|----------|--|--|
| Benzene                       | 71-43-2  | < 1  | < 1  |
| Trichloroethylene             | 79-01-6  | < 1  | < 1  |
| Dibutylphthalate (DBP)*       | 84-74-2  | < 1  | < 1  |
| Diethylhexylphthalate (DEHP)* | 117-81-7 | < 1  | < 1  |

The results are only valid for the tested sample(s).

This report may only be copied or reprinted in its entirety, parts of it only with a written acceptance by Eurofins.

### 6.3 Comparison with Limit Values of AgBB

| Parameter               | Test after 3 days                  |                                  | Test after 28 days                 |                                  |
|-------------------------|------------------------------------|----------------------------------|------------------------------------|----------------------------------|
|                         | Concentration<br>mg/m <sup>3</sup> | Limit Value<br>mg/m <sup>3</sup> | Concentration<br>mg/m <sup>3</sup> | Limit Value<br>mg/m <sup>3</sup> |
| TVOC                    | 0.0053                             | ≤ 10                             | < 0.005                            | ≤ 1.0                            |
| TSVOC                   | < 0.005                            | -                                | < 0.005                            | ≤ 0.1                            |
| R-value (dimensionless) | 0.0009                             | -                                | 0                                  | ≤ 1                              |
| Sum without NIK         | < 0.005                            | -                                | < 0.005                            | ≤ 0.1                            |
| Formaldehyde            | -                                  | -                                | < 0.003                            | ≤ 0.1                            |
| Total carcinogens       | < 0.001                            | ≤ 0.01                           | < 0.001                            | ≤ 0.001                          |

Compliance with the limits alone does not entitle to use the AgBB requirements in conjunction with approval by DIBt. This requires an application, site inspection, and approval. See [www.eurofins.com/dibt-procedures](http://www.eurofins.com/dibt-procedures).

### 6.4 Comparison with Limit Values of the Belgian Regulation

| Parameter               | Test after 28 days                 |                                  |
|-------------------------|------------------------------------|----------------------------------|
|                         | Concentration<br>µg/m <sup>3</sup> | Limit Value<br>µg/m <sup>3</sup> |
| TVOC                    | < 5                                | ≤ 1000                           |
| TSVOC                   | < 5                                | ≤ 100                            |
| R-value (dimensionless) | 0                                  | ≤ 1                              |
| Total carcinogens       | < 1                                | ≤ 1                              |
| Toluene                 | < 5                                | ≤ 300                            |
| Formaldehyde            | < 3                                | ≤ 100                            |
| Acetaldehyde            | < 3                                | ≤ 200                            |

### 6.5 Comparison with Limit Values of EN 717-1<sup>\$</sup>

| Parameter            | Concentration<br>mg/m <sup>3</sup> | E2<br>mg/m <sup>3</sup> | E1<br>mg/m <sup>3</sup> |
|----------------------|------------------------------------|-------------------------|-------------------------|
| Formaldehyde 28 days | < 0.003                            | > 0.10                  | ≤ 0.10                  |

The formaldehyde result is based on chamber testing and DNPH sampling according to ISO 16000. The result is therefore not directly according to the EN 717-1, and there are a few small deviations from EN 717-1 (see section on general deviations). The testing is in accordance with conclusions presented in CEN TC351 WG2 N174 where the difference and compatibility between EN 717-1 and ISO 16000 are empirically and theoretically analysed. For results close to the limit value it is recommended to perform an EN 717-1 test for verification.

## 6.6 Comparison with Limit Values of Indoor Air Comfort®

|   | Test after 3 days                         |   | Test after 28 days                        |   |
|---|---|---|---|---|
|   | Concentration<br>$\mu\text{g}/\text{m}^3$ | Limit Value<br>$\mu\text{g}/\text{m}^3$ | Concentration<br>$\mu\text{g}/\text{m}^3$ | Limit Value<br>$\mu\text{g}/\text{m}^3$ |
| TVOC (CEN/TS 16516)                         | 5.3                                       | $\leq 10000$                            | $< 5$                                     | $\leq 1000$                             |
| TSVOC                                       | $< 5$                                     | -                                       | $< 5$                                     | $\leq 100$                              |
| R <sub>D</sub> -value (NIK) (dimensionless) | 0.0009                                    | -                                       | 0   | $\leq 1$                                |
| R <sub>B</sub> -value (LCI) (dimensionless) | 0.0009                                    | -                                       | 0   | $\leq 1$                                |
| TVOC without NIK or LCI                     | $< 5$                                     | -                                       | $< 5$                                     | $\leq 100$                              |
| Total carcinogens                           | $< 1$                                     | $\leq 10$                               | -   | -                                       |
| Any individual carcinogens                  | -   | -                                       | $< 1$                                     | $\leq 1$                                |
| CMR substances                              | -   | -                                       | $< 1$                                     | $\leq 1$                                |
| Formaldehyde                                | $< 3$                                     | -                                       | $< 3$                                     | $\leq 60$                               |
| Acetaldehyde                                | $< 3$                                     | -                                       | $< 3$                                     | $\leq 200$                              |
| French A+/A                                 | -   | -                                       | Complies                                  |   |

Compliance with the limits alone does not entitle to use the Indoor Air Comfort label. This requires an application, site inspection, and approval. See [www.eurofins.com/iac-procedures](http://www.eurofins.com/iac-procedures).

## 6.7 Comparison with Limit Values of Indoor Air Comfort Gold®

|   | Test after 3 days                         |   | Test after 28 days                        |   |
|---|---|---|---|---|
|   | Concentration<br>$\mu\text{g}/\text{m}^3$ | Limit Value<br>$\mu\text{g}/\text{m}^3$ | Concentration<br>$\mu\text{g}/\text{m}^3$ | Limit Value<br>$\mu\text{g}/\text{m}^3$ |
| TVOC (CEN/TS 16516)                         | 5.3                                       | $\leq 1000$                             | $< 5$                                     | $\leq 100$                              |
| TSVOC                                       | $< 5$                                     | -                                       | $< 5$                                     | $\leq 50$                               |
| R <sub>D</sub> -value (NIK) (dimensionless) | 0.0009                                    | -                                       | 0   | $\leq 1$                                |
| R <sub>B</sub> -value (LCI) (dimensionless) | 0.0009                                    | -                                       | 0   | $\leq 1$                                |
| TVOC without NIK or LCI                     | $< 5$                                     | -                                       | $< 5$                                     | $\leq 40$                               |
| Total carcinogens                           | $< 1$                                     | $\leq 10$                               | -   | -                                       |
| Any individual carcinogens                  | -   | -                                       | $< 1$                                     | $\leq 1$                                |
| CMR substances                              | -   | -                                       | $< 1$                                     | $\leq 1$                                |
| Formaldehyde                                | $< 3$                                     | -                                       | $< 3$                                     | $\leq 10$                               |
| Acetaldehyde                                | $< 3$                                     | -                                       | $< 3$                                     | $\leq 200$                              |
| French A+                                   | -   | -                                       | Complies                                  |   |

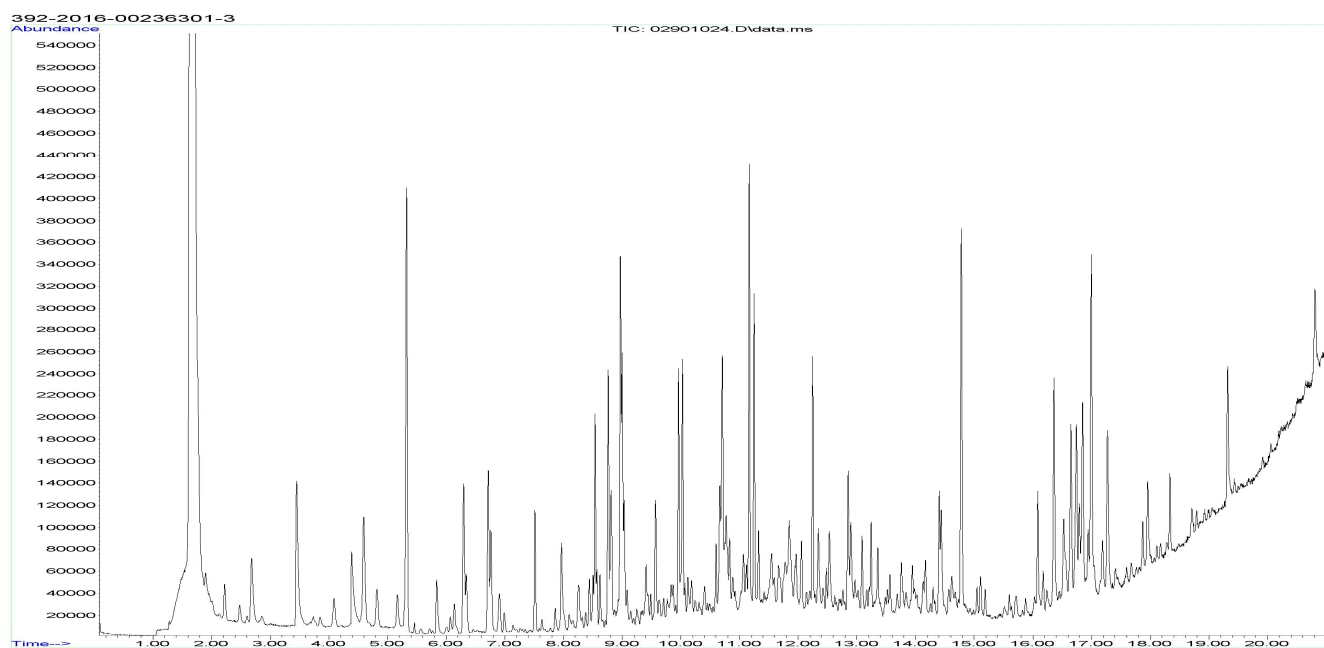
Compliance with the limits alone does not entitle to use the Indoor Air Comfort GOLD label. This requires an application, site inspection, and approval. See [www.eurofins.com/iac-procedures](http://www.eurofins.com/iac-procedures).

## 6.8 Comparison with Limit Values of Blue Angel (RAL UZ 117)

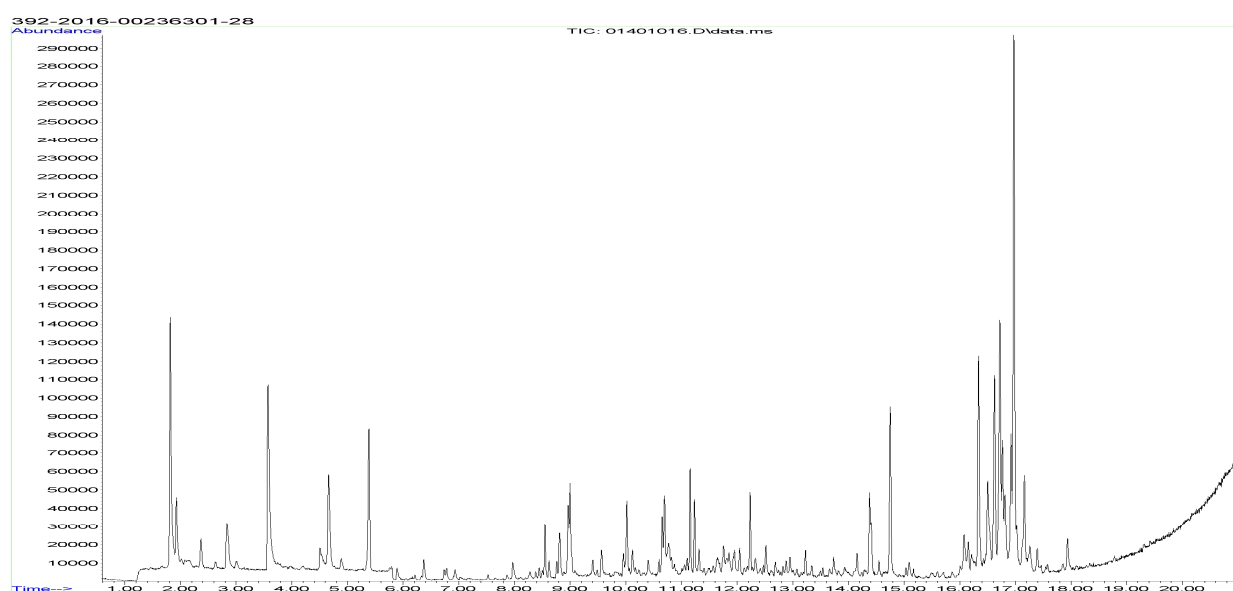
|                                   | Test after 3 days                         |   | Test after 28 days                        |   |
|-----------------------------------|---|---|---|---|
|                                   | Concentration<br>$\mu\text{g}/\text{m}^3$ | Limit Value<br>$\mu\text{g}/\text{m}^3$ | Concentration<br>$\mu\text{g}/\text{m}^3$ | Limit Value<br>$\mu\text{g}/\text{m}^3$ |
| <b>TVOC (CEN/TS 16516)</b>        | 5.3                                       | -                                       | < 5                                       | $\leq 450$                              |
| <b>TSVOC</b>                      | < 5                                       | -                                       | < 5                                       | $\leq 80$                               |
| <b>R-value (dimensionless)</b>    | 0.0009                                    | -                                       | 0   | $\leq 1$                                |
| <b>TVOC without NIK</b>           | < 5                                       | -                                       | < 5                                       | $\leq 40$                               |
| <b>Total carcinogens</b>          | < 1                                       | $\leq 10$                               | -   | -                                       |
| <b>Any individual carcinogens</b> | -   | -                                       | < 1                                       | $\leq 1$                                |
| <b>Formaldehyde</b>               | < 3                                       | -                                       | < 3                                       | $\leq 60$                               |
| <b>Other aldehydes, total</b>     | < 3                                       | -                                       | < 3                                       | $\leq 60$                               |

## 7 Appendices

### 7.1 Chromatogram of VOC Emissions after 3 Days



### 7.2 Chromatogram of VOC Emissions after 28 Days



Please consider the different scales.

The results are only valid for the tested sample(s).

This report may only be copied or reprinted in its entirety, parts of it only with a written acceptance by Eurofins.

## 7.3 How to Understand the Results

### 7.3.1 Acronyms Used in the Report

- < Means less than
  - > Means bigger than
  - \* Not a part of our accreditation
  - α Um(%) is given as 2x RSD%. Please see section regarding Uncertainty in the Appendices.
  - § Deviation from method. Please see deviation section
  - a The method is not optimal for very volatile compounds. For these substances smaller results and a higher measurement uncertainty cannot be ruled out.
  - b The component originates from the wooden panels and is thus removed.
  - c The results have been corrected by the emission from wooden panels.
  - d Very polar organic compounds are not suitable for reliable quantification using tenax TA adsorbent and HP-5 GC column. A high degree of uncertainty must be expected.
- SER Specific emission rate.

### 7.3.2 Explanation of ID Category

#### Categories of Identity:

- 1: Identified and specifically calibrated
- 2: Identified by comparison with a mass spectrum obtained from library and supported by other information. Calibrated as toluene equivalent.
- 3: Identified by comparison with a mass spectrum obtained from a library. Calibrated as toluene equivalent.
- 4: Not identified, calibrated as toluene equivalent.

## 7.4 Applied LCI and NIK Values

### 7.4.1 LCI/NIK Values for Compounds found after 3 Day Measurements

| Compound  | CAS No. | AgBB 2015 NIK<br>[µg/m³] | Belgian NIK<br>[µg/m³] |
|---|---------|--------------------------|------------------------|
| Saturated aliphatic hydrocarbons higher than C9 * | -       | 6000                     | 6000                   |

### 7.4.2 LCI/NIK Values for Compounds found after 28 Day Measurements

| Compound        | CAS No. | AgBB 2015 NIK<br>[µg/m³] | Belgian NIK<br>[µg/m³] |
|-----------------|---------|--------------------------|------------------------|
| None determined | -       | -                        | -                      |

## 7.5 Description of VOC Emission Test

### 7.5.1 Test Chamber

The test chamber is made of stainless steel. A multi-step air clean-up is performed before loading the chamber, and a blank check of the empty chamber is performed.

The chamber operation parameters are as described in the test method section. (CEN/TS 16516, ISO 16000-9, internal method no.: 71M549811).

### 7.5.2 Expression of the Test Results

All test results are calculated as specific emissions rate, and as extrapolated air concentration in the European Reference Room (CEN/TS 16516, AgBB, EMICODE, M1 and Indoor Air Comfort).

### 7.5.3 Testing of Carcinogenic VOCs

The emission of carcinogens (EU Categories C1A and C1B, as per European law) is tested by drawing sample air from the test chamber outlet through Tenax TA tubes after the specified duration of storage in the ventilated test chamber. Analysis is performed by ATD-GC/MS (automated thermal desorption coupled with gas chromatography and mass spectroscopy using 30 m HP-5 (slightly polar) column with 0.25 mm ID and 0.25 µm film, Agilent) (CEN/TS 16516, ISO 16000-6, internal methods no.: 71M549812 / 71M542808B).

All identified carcinogenic VOCs are listed; if a carcinogenic VOC is not listed then it has not been detected. Quantification is performed using the TIC signal and authentic response factors, or the relative response factors relative to toluene for the individual compounds.

This test only covers substances that can be adsorbed on Tenax TA and can be thermally desorbed. If other emissions occur, then these substances cannot be detected (or with limited reliability only).

### 7.5.4 Testing of VOC, SVOC and VVOC

The emissions of volatile organic compounds are tested by drawing sample air from the test chamber outlet through Tenax TA tubes after the specified duration of storage in the ventilated test chamber. Analysis is performed by ATD-GC/MS using HP-5 column (30 m, 0.25mm ID, 0.25µm film) (CEN/TS 16516, ISO 16000-6, internal methods no.: 71M549812 / 71M542808B).

All single substances that are listed with a LCI/NIK value in the latest publications (hereafter referred to as target compounds) are identified if present. All other appearing VOCs are identified as far as possible. Quantification of target compounds is done using the TIC signal and authentic response factors, or the relative response factors relative to toluene. For certain compound groups, which differ significantly in chemistry from toluene, quantification is performed relative to a representative member of the group for more accurate and precise results. This can include quantification of for example glycols and acids. In addition to that, all results are also expressed in toluene equivalents. All non-target compounds, as well as all non-identified substances, are quantified in toluene equivalents.

The results of the individual substances are calculated in three groups depending on their retention time when analyzing using a non-polar column (HP-1):

- Volatile Organic Compounds (VOC) are defined as: All substances eluting between and including n-hexane (n-C6) and n-hexadecane (n-C16)
- Semi-Volatile Organic Compounds (SVOC) are defined as: All substances eluting after n-hexadecane (n-C16) and before and including n-docosane (n-C22)
- Very Volatile Organic Compounds (VVOC) are defined as: All substances eluting before n-hexane (n-C6).



Total Volatile Organic Compounds (TVOC) is calculated by summation of all individual VOCs with a concentration  $\geq 5 \mu\text{g}/\text{m}^3$ . The TVOC can be expressed either in toluene equivalents as defined in CEN/TS 16516 and similar to ISO 16000-6, or as the sum of concentrations using specific or relative response factors. In the case of summation of concentrations using authentic or relative response factors, the toluene equivalent is applied to all non-target and non-identified VOCs before summing up. Compounds regarded as VOC in line with the above definition but elute before n-C6 or after n-C16 on the HP-5 column are treated as VOC, and are thus added to the TVOC.

Total Semi-Volatile Organic Compounds (TSVOC) is calculated by the summation of all individual SVOCs expressed in toluene equivalents with a concentration  $\geq 5 \mu\text{g}/\text{m}^3$ , as defined in CEN/TS 16516. VOCs that are regarded as VOC in line with the above definition, but elute after n-C16 in this test, are not added to the TSVOC.

Total Very Volatile Organic Compounds (TVVOC) is calculated by the summation of all individual VVOCs with a concentration  $\geq 5 \mu\text{g}/\text{m}^3$  and expressed in toluene equivalents. VOCs that are regarded as VOC in line with the above definition, but elute before n-C6 in this test, are not added to the TVVOC.

This test only covers substances which can be adsorbed on Tenax TA and can be thermally desorbed. If emissions of substances outside these specifications occur then these substances cannot be detected (or with limited reliability only).

#### 7.5.5 Calculation of R Values with LCI Lists

The concentrations of detected compounds  $\geq 5 \mu\text{g}/\text{m}^3$  are divided by their respective LCI/NIK value (if defined in the given publication). The sum of the quotients gives the R value, which can be mathematically expressed:

$$R = \sum_i^n \left( \frac{c_i}{\text{NIK}_i} + \dots + \frac{c_n}{\text{NIK}_n} \right)$$

This R value is calculated, depending on the purpose of this test, for the European LCI list, for the German LCI/NIK list ( $R_D$ ), and/or for the Belgian LCI list ( $R_B$ ).

All VOCs without published LCI/NIK value and concentration  $\geq 5 \mu\text{g}/\text{m}^3$  are summed up as sum of VOCs without LCI/NIK if required by the standard or protocol.

#### 7.5.6 Testing of Aldehydes

The presence of aldehydes after the specified duration of storage in the ventilated test chamber is tested by drawing air samples from the test chamber outlet through DNPH-coated silicagel tubes after the specified duration of storage in the ventilated test chamber. Analysis is performed by solvent desorption and subsequently by HPLC and UV-/diode array detection.

The absence of formaldehyde and other aldehydes is stated if UV detector response at the specific wavelength is lacking at the specific retention time in the chromatogram. Otherwise it is checked whether the reporting limit is exceeded. In this case the identity is finally checked by comparing full scan sample UV spectra with full scan standard UV spectra.

#### 7.5.7 Testing of Phthalates

The presence of phthalates is tested by drawing air samples from the test chamber outlet through tube with XAD-II adsorbent after the specified duration of storage in the ventilated test chamber. Analysis is performed by solvent desorption and subsequently by GC/MS. Analysis of phthalates is not currently covered by the accreditation (Internal methods no.: 71M549812 / 71M546060).

## 7.6 Quality Assurance

Before loading the test chamber, a blank check of the empty chamber is performed and compliance with background concentrations in accordance with CEN/TS 16516 / ISO 16000-9 is determined.

Air sampling at the chamber outlet and subsequent analysis is performed in duplicate. Relative humidity, temperature and air change rate in the chambers is logged every 5 minutes and checked daily. A double determination is performed on random samples at a regular interval and results are registered in a control chart to ensure the uncertainty and reproducibility of the method.

The stability of the analytical system is checked by a general function test of device and column, and by use of control charts for monitoring the response of individual substances prior to each analytical sequence.

## 7.7 Accreditation

The testing methods described above are accredited on line with EN ISO/IEC 17025 by DANAK (no. 522). This accreditation is valid worldwide due to mutual approvals of the national accreditation bodies (ILAC/IAF, see also [www.eurofins.com/galten.aspx#accreditation](http://www.eurofins.com/galten.aspx#accreditation)).

Not all parameters are covered by this accreditation. The accreditation does not cover parameters marked with an asterisk (\*), however analysis of these parameters is conducted at the same level of quality as for the accredited parameters.

## 7.8 Uncertainty of the Test Method

The relative standard deviation of the overall analysis is 22.5%. The expanded uncertainty  $U_m$  equals 2 x RSD. For further information please visit [www.eurofins.dk/uncertainty](http://www.eurofins.dk/uncertainty).